

# Ampelon Digital Survey Tools for NanoCAD 5 free

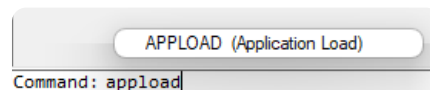
Download the file [ADSurveyTools\\_V1\\_0.zip](#) and extract it somewhere on your PC.

File contents:

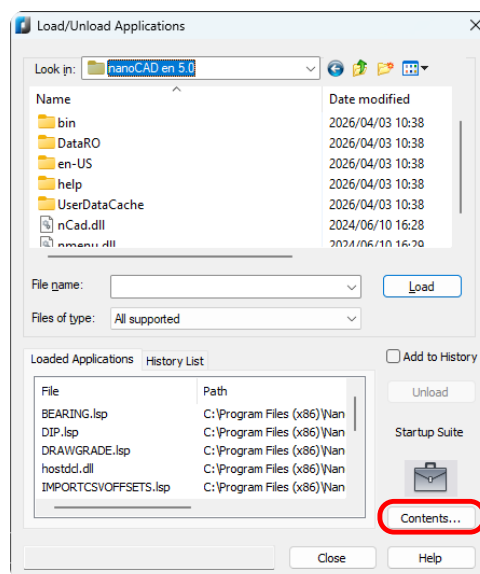
- ADSurveyTools
  - Components
  - Read Me.txt
  - SurveyTools.lsp
  - SurveyTools\_Core.lsp

From NanoCAD 5 free

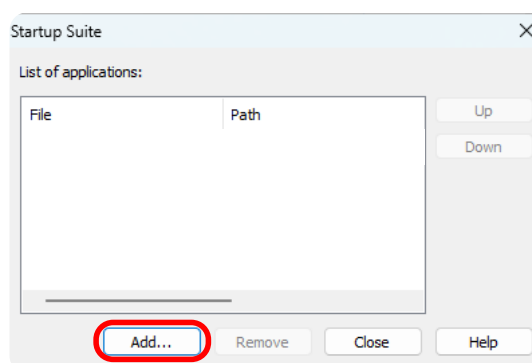
Type `appload` in the command line and select **APpload** (Application Load)



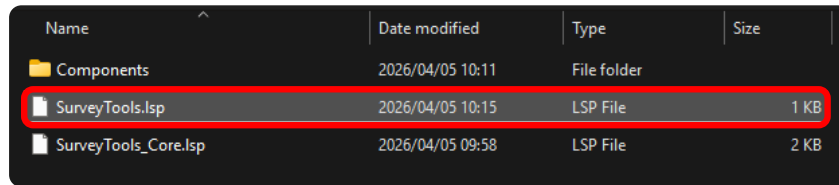
From the Load/Unload Applications panel select **Contents...** button



From the Startup Suite panel click the **Add...** button

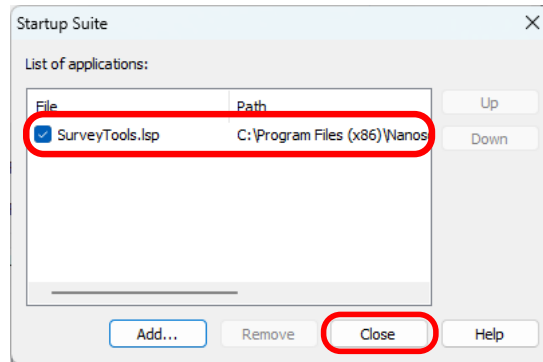


Navigate to extracted zip file and select SurveyTools.lsp

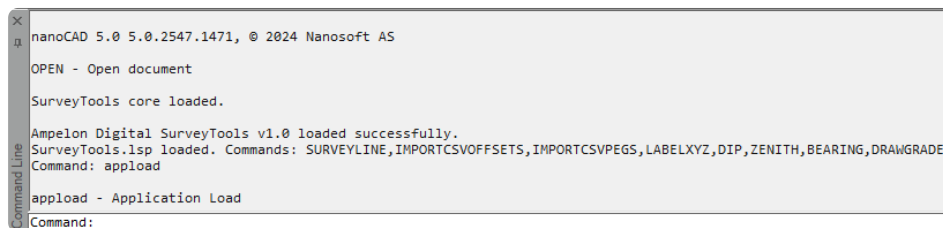


Name	Date modified	Type	Size
Components	2026/04/05 10:11	File folder	
<b>SurveyTools.lsp</b>	2026/04/05 10:15	LSP File	1 KB
SurveyTools_Core.lsp	2026/04/05 09:58	LSP File	2 KB

Click open, then from Starup Suite Panel SurveyTools.lsp should appear in the List of applications section. Click Close



From Load/Unload Applications panel click close, then restart NanoCAD. On next NanoCAD application load Command Line should show Ampelon Digital SurveyTools loaded successfully also showing the list of commands.



```
nanoCAD 5.0 5.0.2547.1471, © 2024 Nanosoft AS
OPEN - Open document
SurveyTools core loaded.
Ampelon Digital SurveyTools v1.0 loaded successfully.
SurveyTools.lsp loaded. Commands: SURVEYLINE,IMPORTCSVOFFSETS,IMPORTCSVPEGS,LABELXYZ,DIP,ZENITH,BEARING,DRAWGRADE
Command: appload
appload - Application Load
Command:
```

## Commands :

### SURVEYLINE:

Select a line with first click, second click select location to give survey line label of Bearing, Zenith Angle and Slope Distance. Good for survey actuals and checks.

### LABELXYZ:

Activate command then select a point to get an XYZ coordinate label

### DIP:

Activate command then select a line to display dip in the Command Line.

## IMPORTCSVOFFSETS:

Type commands to get a file selector. Select a .csv file with the format of Point ID, X-Coord, Y-Coord, Z-Coord. Script will start import from 2nd line of csv file with line 1 reserved for a header line

Expected csv file structure:

	A	B	C	D	
1	PegID	XCoord	YCoord	ZCoord	Header line will not be imported
2	CP9.1	779406.171	6736080.111	941.024	Coordinates imported from here ↓
3	CP9.2	779403.645	6736078.021	940.969	
4	CP9.3	779430.526	6736035.584	940.741	
5	CP9.4	779426.963	6736035.6	941.231	
6	CP9.5	779455.424	6735989.023	941.291	
7	CP9.6	779451.38	6735990.401	941.263	

Plot PointID labels? (Yes/No): Select No for points only, select Yes to also plot PegID's, useful for tachy shots etc. (default No)

## IMPORTCSVPEGS:

Type commands to get a file selector. Same csv structure expected as IMPORTCSVOFFSETS. Pegs will plot with 2 circles and label Survey Station

## ZENITH:

Display zenith angle of a line in Command Line

## BEARING:

Display bearing of a line in Command Line, based on project angle setup

## DRAWGRADE:

Select a start point by clicking in view, type bearing with the format of 000:00:00 (DDD:MM:SSS), Enter Dip with same format, Enter Slope Distance in meters. 30.4, plots a line. In relation to project angle setup. Useful for generating accurate survey lines for stake-outs, references and plotting.